

MUNI
MED

scch { }
software competence
center hagenberg

Electronic data capture systems at IBA

Webstudio



EUROPEAN UNION

Interreg 
EUROPEAN UNION
Austria-Czech Republic
European Regional Development Fund

Background

- Collection of clinical data from multiple sources (hospitals) in a standardized parametric form
- Clinical registries
- Disease-based (epidemiology) or treatment-based (effectiveness, safety of a particular medicine or therapeutic procedure)
- Online authenticated and authorized access

TrialDB2

— Based on the TrialDB system developed at Yale University

IPF-CZ06-017

Date of birth (dd.mm.yyyy)	01.11.1953	Initials	Enrolled by
Sex	Male	Site	FN Plzeň - Klinika TRN
			Date of enrollment

Data form

Save Save and close Recalculate

Follow-up

The interval between follow-ups should be at least 3 months. If patient died please fill in the form End of Observation (do not fill for information that the examination was not performed because of patient's death).

Date of visit (dd.mm.yyyy) * 24.6.2015

Control visit performed * Yes

Reason for not performing the control visit

Weight (kg) * 105

Is this follow-up at the time of diagnosis?

Cigarette smoking

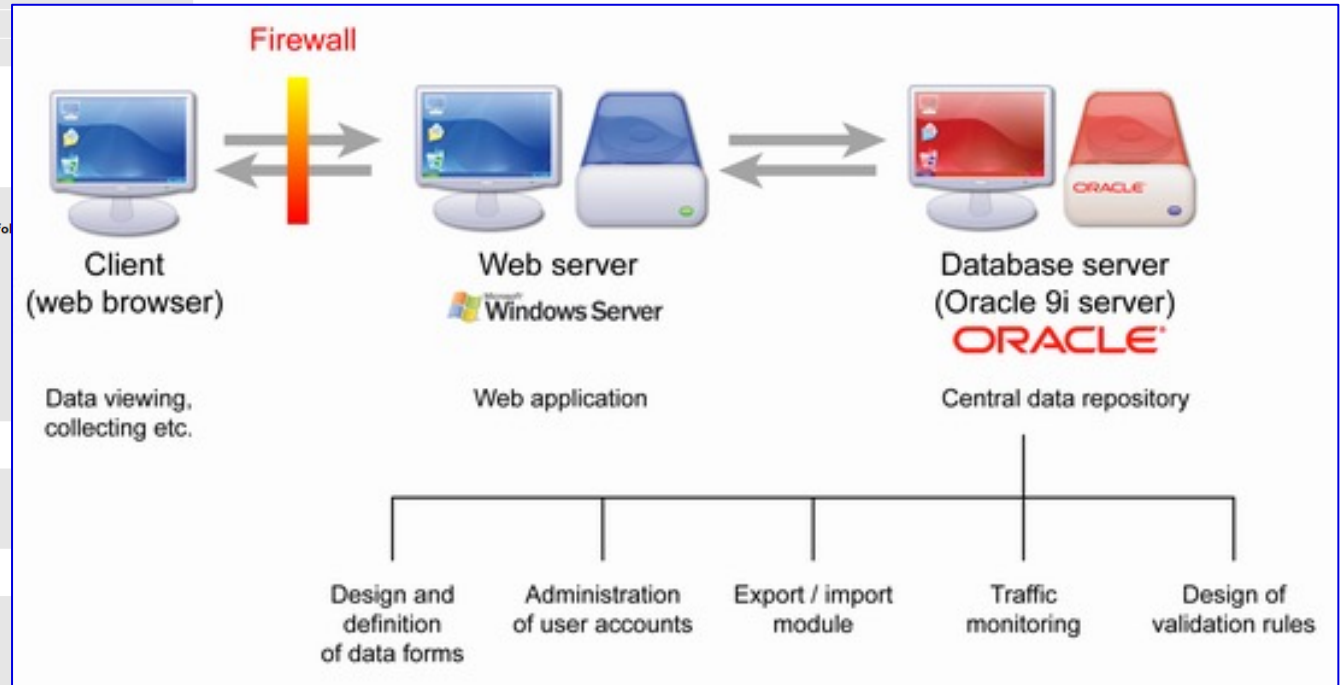
Cigarette smoking *

Average number of cigarette per day

Lung function tests

Lung function tests performed * Yes

Forced vital capacity (FVC) (l) *	3.06
Forced vital capacity (FVC) (% EV)	68.89
Forced expiratory volume in one second (FEV1) (l)	2.83
Forced expiratory volume in one second (FEV1) (% EV)	81.98
Tiffeneau-Pinelli index (FEV1/FVC)	92.48
Total lung capacity (l)	4.74
Total lung capacity (% EV)	64.91



CLADE-IS

- Clinical Data Warehousing Information System
- In-house development

CRCA-9999-0-test | Cvičný pacient

Centrum	CBA	Lékař	Pavličková Barbora	Datum založení pacienta	11. 8. 2017 9:20
Datum narození	21.07.1989	Pohlaví	Muž		

Vyšetření pacienta | fáze CRCA

ID	548849	Vytvořil/a	Májek Ondřej	3. 1. 2018 10:10
Stav	Úplný	Změnil/a	Pavličková Barbora	5. 3. 2018 17:32

Informace o pacientovi v době vyšetření

Indikace kolonoskopického vyšetření

Pozitivní test na okultní krvácení ve stolici

Kolonoskopie

INFORMACE O PACIENTOVI V DOBĚ VYŠETŘENÍ

* Zdravotní pojišťovna
111 - Všeobecná zdravotní pojišťovna

* Bydliště - okres

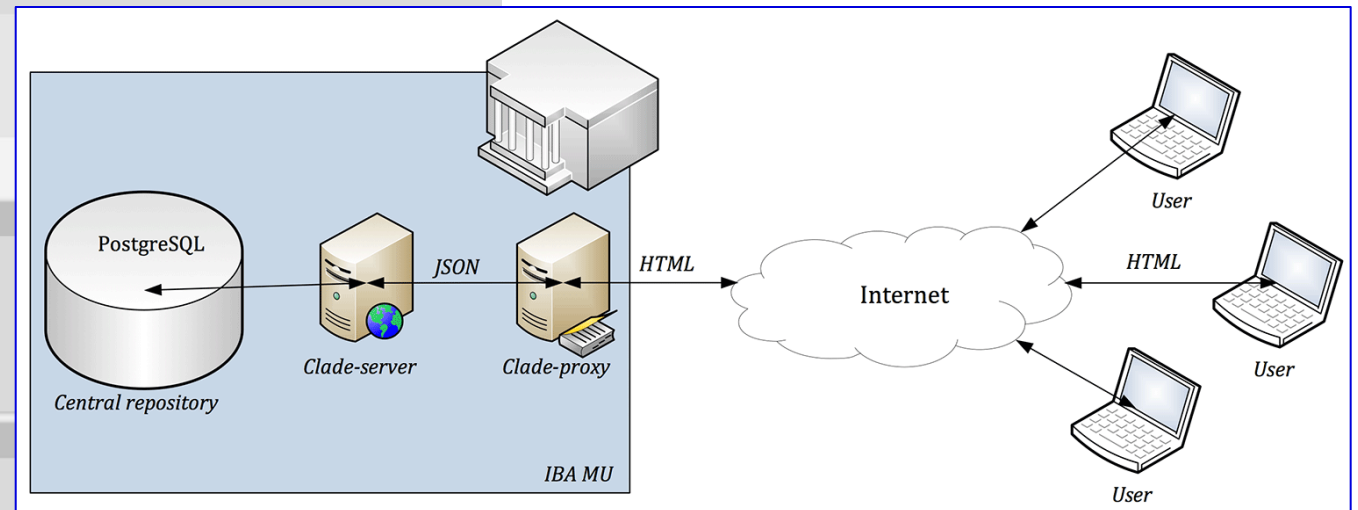
Bydliště - okres lze vyhledávat od tří zadaných znaků.

INDIKACE KOLONOSKOPICKÉHO VYŠETŘENÍ

* Indikace kolonoskopického vyšetření

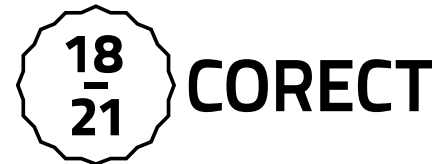
TOKS-pozitivní kolonoskopie Screeningová kolonoskopie

POZITIVNÍ TEST NA OKULTNÍ KRVÁCENÍ VE STOLICI



Applications

– Over 100 research projects and applications from 2003 by now



DAFALL
DATABASE OF FOOD ALLERGY



Oncology

- TULUNG, CORECT, BREAST, RENIS Monitoring of targeted cancer therapy (national registries of lung, colorectal, breast, and kidney cancer patients receiving targeted therapy)
- Data from national cancer screening programmes (mammography, colonoscopy)

Neurology

- [REaDY](#) Registry of muscular dystrophies – helping patients to participate in international clinical trials
- [IKTA.cz](#) National stroke registry – monitoring of patients with stroke, monitoring of practice in stroke centers

Pneumology

- **EMPIRE** International registry of patients with idiopathic pulmonary fibrosis – rare disease, modern antifibrotic therapies
- **COPD** Monitoring and characterization of patients with chronic obstructive pulmonary disease

Environment

- **GMP Data Warehouse** – a database and visualization for UNEP, data from monitoring of persistent organic pollutants falling under the Stockholm Convention