

# SOCRATIVE

<https://www.socrative.com/>

## What is it?

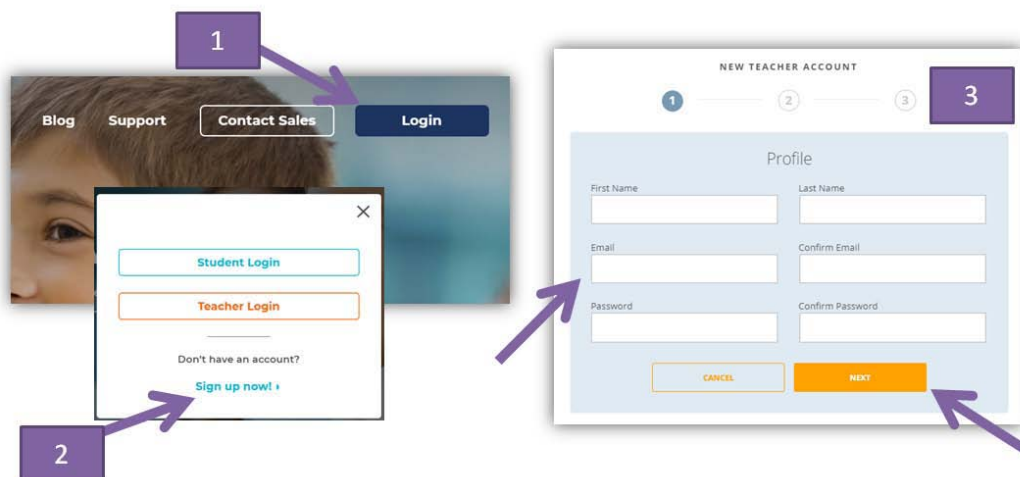
An online tool for getting a feedback from your students immediately – ideal for online quizzes or simple questions.

## What do we need to use it?

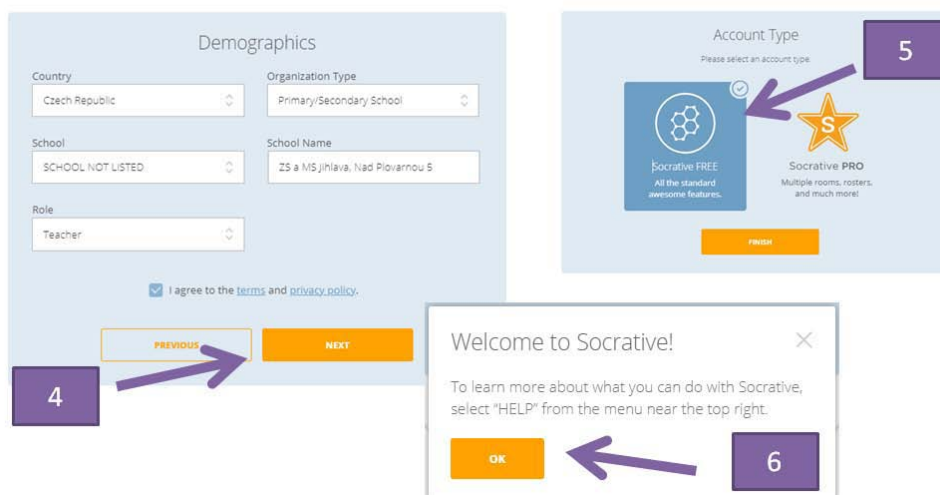
E-mail address.

## How to use it?

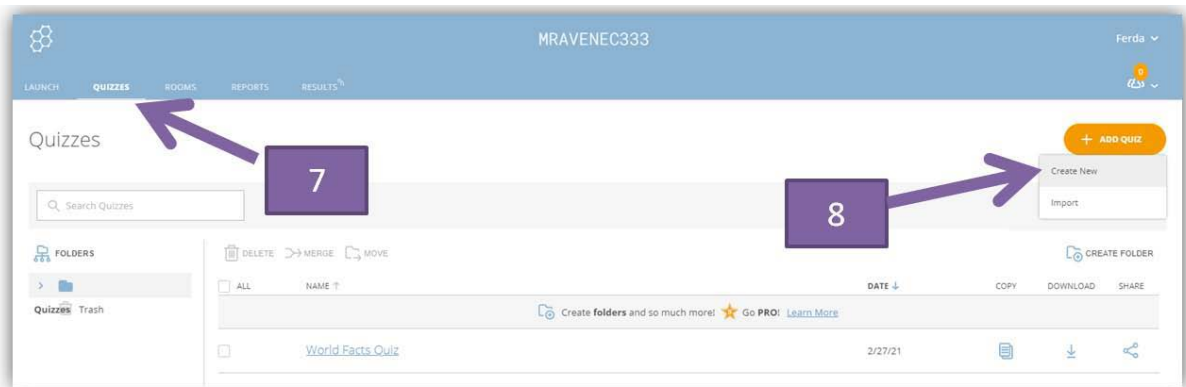
At first you need to sign up and create your account at <https://www.socrative.com/>. Click *Login* (1) and choose the last option *Sign up now!* (2). Fill in your name, password and your e-mail address. Confirm all these details by clicking the button *Next* (3).



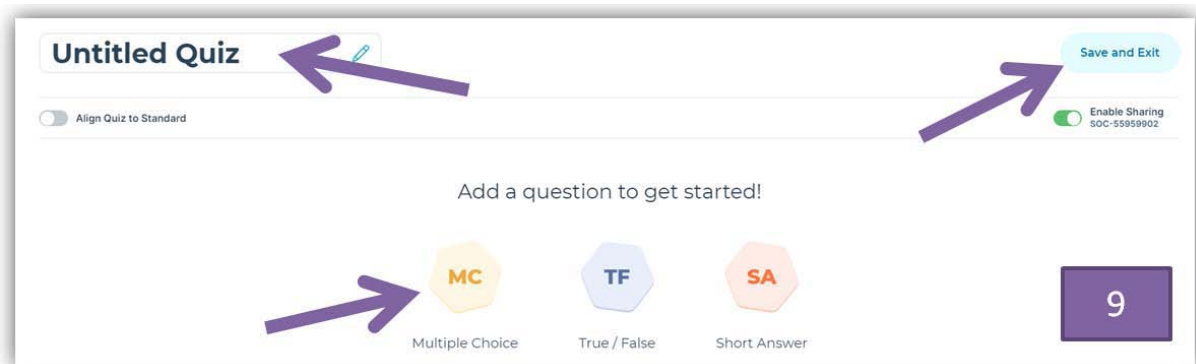
To finish your registration please provide the details of your country, school, your job (4). Choose the Account type - FREE (5). Finish this step by clicking OK in the next window (6).



How can you create a new quiz for your students? Go to *Quizzes* tab(7) and choose the option *Create New* (8).



Give your quiz a title and you are ready to create the questions. You can use 3 types of questions - *Multiple Choice*, *Short Answer* and *True / False* (valid / invalid statement). Once you are happy with your set of questions you can save the quiz by clicking the button *Save and Exit*. (9)



The next step is to give your virtual room a name of your choice. This is the only piece of information your students need to know. Go to *Rooms* tab and by clicking the blue pencil you can rename your room (10).

